

Clinical Determinants of Response to Irinotecan-Based Therapy Derived from Cell Line Models

Wendy L. Allen,¹ Vicky M. Coyle,¹ Puthen V. Jithesh,¹ Irina Proutski,¹ Leanne Stevenson,¹ Cathy Fenning,¹ Daniel B. Longley,¹ Richard H. Wilson,¹ Michael Gordon,² Heinz-Josef Lenz,² and Patrick G. Johnston¹

Abstract Purpose: In an attempt to identify genes that are involved in resistance to SN38, the active metabolite of irinotecan (also known as CPT-11), we carried out DNA microarray profiling of matched HCT116 human colon cancer parental cell lines and SN38-resistant cell lines following treatment with SN38 over time.

Experimental Design: Data analysis identified a list of genes that were acutely altered in the parental cells following SN38 treatment as well as constitutively altered in the SN38-resistant cells.

Results: Independent validation of 20% of these genes by quantitative reverse transcription-PCR revealed a strong correlation with the microarray results: Pearson's correlation was 0.781 ($r^2 = 0.61$, $P < 0.000001$) for those genes that were acutely altered in the parental setting following SN38 treatment and 0.795 ($r^2 = 0.63$, $P < 0.000002$) for those genes that were constitutively altered in the SN38-resistant cells. We then assessed the ability of our *in vitro*-derived gene list to predict clinical response to 5-fluorouracil/irinotecan using pretreatment metastatic biopsies from responding and nonresponding colorectal cancer patients using both unsupervised and supervised approaches. When principal components analysis was used with our *in vitro* classifier gene list, a good separation between responding and nonresponding patients was obtained, with only one nonresponding and two responding patients separating with the incorrect groups. Supervised class prediction using support vector machines algorithm identified a 16-gene classifier with 75% overall accuracy, 81.8% sensitivity, and 66.6% specificity.

Conclusions: These results suggest that *in vitro*-derived gene lists can be used to predict clinical response to chemotherapy in colorectal cancer.

In advanced-stage colorectal cancer, combination therapy with 5-fluorouracil (5-FU) and irinotecan (CPT-11) produces inadequate response rates of about 40% to 50% (1, 2). The main reason for the lack of response is drug resistance, which may be either innate or acquired in nature. Many studies have identified markers that may be useful in predicting response to these chemotherapies (3–9), although due to several factors, none of these potential predictive markers have progressed to routine clinical use. Studies have also established that there appears to be a greater ability to predict response to treatment

when single predictive markers are combined into cassettes of markers (7). The ultimate aim of predictive marker testing is to tailor treatment according to an individual patient/tumor profile. Most active agents against colorectal cancer have only moderate clinical activity; hence, there is a need to find new predictive markers to identify those patients who are most likely to respond to the treatment.

In the past, many studies have used gene expression profiling to identify novel resistance markers and markers that may represent novel drug targets (10, 11). More recently, gene expression profiling studies have attempted to identify both prognostic (12–16) and predictive (17, 18) signatures of response using patient biopsies, clinical response data, and supervised classification approaches.

The aim of this study was to examine the gene expression changes of HCT116 colorectal cancer cells following acute exposure to SN38 (the active metabolite of CPT-11) over time and also the constitutive gene expression of HCT116 SN38-resistant daughter cells (19). We were most interested in identifying those *in vitro* genes that were both acutely altered following SN38 treatment in the parental cells and also constitutively altered in the SN38-resistant cells, as we feel that these may represent the key genes mediating SN38 resistance. In addition, we wanted to assess the feasibility of using our *in vitro*-derived gene sets as determinants of response to chemotherapy in patients.

Authors' Affiliations: ¹Centre for Cancer Research and Cell Biology, Queen's University Belfast, Belfast, Northern Ireland and ²Division of Medical Oncology, University of Southern California/Norris Comprehensive Cancer Center, Keck School of Medicine, Los Angeles, California

Received 2/19/08; revised 6/9/08; accepted 6/12/08.

The costs of publication of this article were defrayed in part by the payment of page charges. This article must therefore be hereby marked *advertisement* in accordance with 18 U.S.C. Section 1734 solely to indicate this fact.

Note: Supplementary data for this article are available at Clinical Cancer Research Online (<http://clincancerres.aacrjournals.org/>).

W.L. Allen and V.M. Coyle contributed equally to this work.

Requests for reprints: Patrick G. Johnston, Centre for Cancer Research and Cell Biology, Queen's University Belfast, 97 Lisburn Road, Belfast BT9 7BL, Northern Ireland, Phone: 44-28-90972764; Fax: 44-28-90972596; E-mail: pjmedschool@qub.ac.uk.

© 2008 American Association for Cancer Research.

doi:10.1158/1078-0432.CCR-08-0452

Translational Relevance

Although there have been significant improvements in the treatment of advanced colorectal cancer, drug resistance remains a major problem limiting the effectiveness of chemotherapy. This study aims to identify genes associated with irinotecan (CPT-11) resistance *in vitro* and to fully assess the utility of these genes in predicting response in the clinical setting. Firstly, those genes mediating resistance to CPT-11 may represent novel targets for therapeutic intervention; if further phenotypic analysis of these genes proved positive, targeting these genes in combination with traditional chemotherapy should enhance patient response to this treatment. Secondly, the identification of a gene signature predictive of patient response to combination 5-fluorouracil/CPT-11 therapy could potentially be used to predict which patients will not respond to combined 5-fluorouracil/CPT-11 therapy. Following further independent validation, it is hoped such a signature could be routinely used to predict response sparing those patients unlikely to respond to treatment unnecessary toxicity, time, and expense.

Materials and Methods

Materials

SN38 was purchased from Abatara Technology.

Cell culture

The p53 wild-type and p53-null HCT116 human colon cancer cell lines were kindly provided by Prof. Bert Vogelstein (Johns Hopkins University). The SN38-resistant HCT116 subline was generated from the HCT116 p53 wild-type parental cell line in our laboratory by repeated exposure to stepwise increasing concentrations of SN38 over a period of ~9 months and spiked every 4 weeks with 5 nmol/L SN38 to maintain the resistant phenotype (19). The IC_{50} for SN38 in the HCT116 parental cell line was 5 nmol/L, whereas the IC_{50} for SN38 was >100 nmol/L in the HCT116 SN38-resistant subline. All HCT116 cell lines were maintained in McCoy's 5A medium supplemented with 10% dialyzed FCS, 50 µg/mL penicillin-streptomycin, 2 mmol/L L-glutamine, and 1 mmol/L sodium pyruvate. RKO and HT29 cells (obtained from the National Cancer Institute) were maintained in DMEM and supplemented as above. LoVo cells (kindly provided by AstraZeneca) were maintained in DMEM supplemented as above minus sodium pyruvate (all media and supplements from Invitrogen Life Technologies). All cell lines were maintained at 37°C in a humidified atmosphere containing 5% CO₂.

Microarray analysis

HCT116 parental cells were treated with 5 nmol/L SN38 for 0, 6, 12, and 24 h as outlined in Fig. 1. Also, untreated SN38-resistant cells were analyzed to identify those genes that are constitutively deregulated between parental and resistant cells. Total RNA was isolated from three independent experiments using the RNA STAT-60 Total RNA isolation reagent (Tel-Test) according to the manufacturer's instructions. Total RNA (5 µg) was sent to Almac Diagnostics for cDNA synthesis, cRNA synthesis, fragmentation, and hybridization onto Affymetrix HG U133 Plus2.0 microarrays. Detailed experimental protocols and raw expression data are available at ArrayExpress³ (accession no. E-MEXP-1171).

Data analysis

Generation of gene lists. Microarray data analysis was done using GeneSpring v7.3 (Agilent Technologies UK) as described previously (10). Initially, two independent experiments were created from the microarray raw data. Firstly, to analyze drug-inducible gene expression in HCT116 parental cells, all genes from each of the three replicate arrays were normalized to the median signal intensity of that array. Secondly, each gene on the 6, 12, and 24 h sample arrays was normalized to the median signal intensity of the respective gene on the 0 h (control) array. In addition, the variance for each gene was estimated using the Cross-Gene Error Model (based on the Rocke-Lorenzo model). Genes were filtered using three variables. Firstly, all genes that displayed an Affymetrix present or marginal flag call in all samples were retained. The gene list was subsequently filtered using the cross-gene error model, with genes displaying control values greater than the average base/proportional value being retained (this was required in all samples for any gene). Finally, the list was filtered using a 2-fold cutoff for each gene relative to the 0 h control, with genes meeting this criterion in at least one of the three time points being retained. The genes passing these three filters were considered to be drug-inducible. All data are displayed as log₂.

The second experiment aimed to compare basal gene expression in the HCT116 parental cell line relative to the SN38-resistant daughter line. As described above, all genes on each of the three replicate arrays were initially normalized to the median signal intensity of that array. Each gene was then normalized to the median signal intensity of the respective gene on all arrays. The data were filtered as described above, with genes required to show a 2-fold up-regulation or down-regulation in the resistant cell line relative to the parental line. The resultant lists of genes were considered transcriptionally deregulated in drug-resistant cells relative to parental cells.

The two gene lists described above were combined using the Venn diagram functionality in GeneSpring to identify those genes that were both constitutively deregulated in the drug-resistant cell lines and induced or repressed in the parental cell line following acute exposure to chemotherapy. The genes that were common to both lists appeared in the intersection of the diagram and were subsequently retained as the final working gene list.

Unsupervised analysis. The 124 *in vitro*-derived genes were taken forward to assess if they were able to separate 5-FU/CPT-11 responding and nonresponding advanced colorectal cancer patients using both unsupervised and supervised approaches (Fig. 1C). In unsupervised analysis, principal components analysis (PCA) was used to separate 5-FU/CPT-11 responding and nonresponding patients based on the expression of the *in vitro*-derived genes identified from the initial microarray analysis.

Supervised analysis. In supervised analysis, the *in vitro*-derived gene list was used as the starting features to classify 5-FU/CPT-11 responding and nonresponding patients. The classification rule was defined using the support vector machine algorithm (Genespring v7.3; Agilent Technologies) with Fisher's exact test used as the gene selection method and the polydot product function method as the kernel function. Finally, leave-one-out cross-validation was used to estimate the performance and accuracy of the resultant class prediction rule.

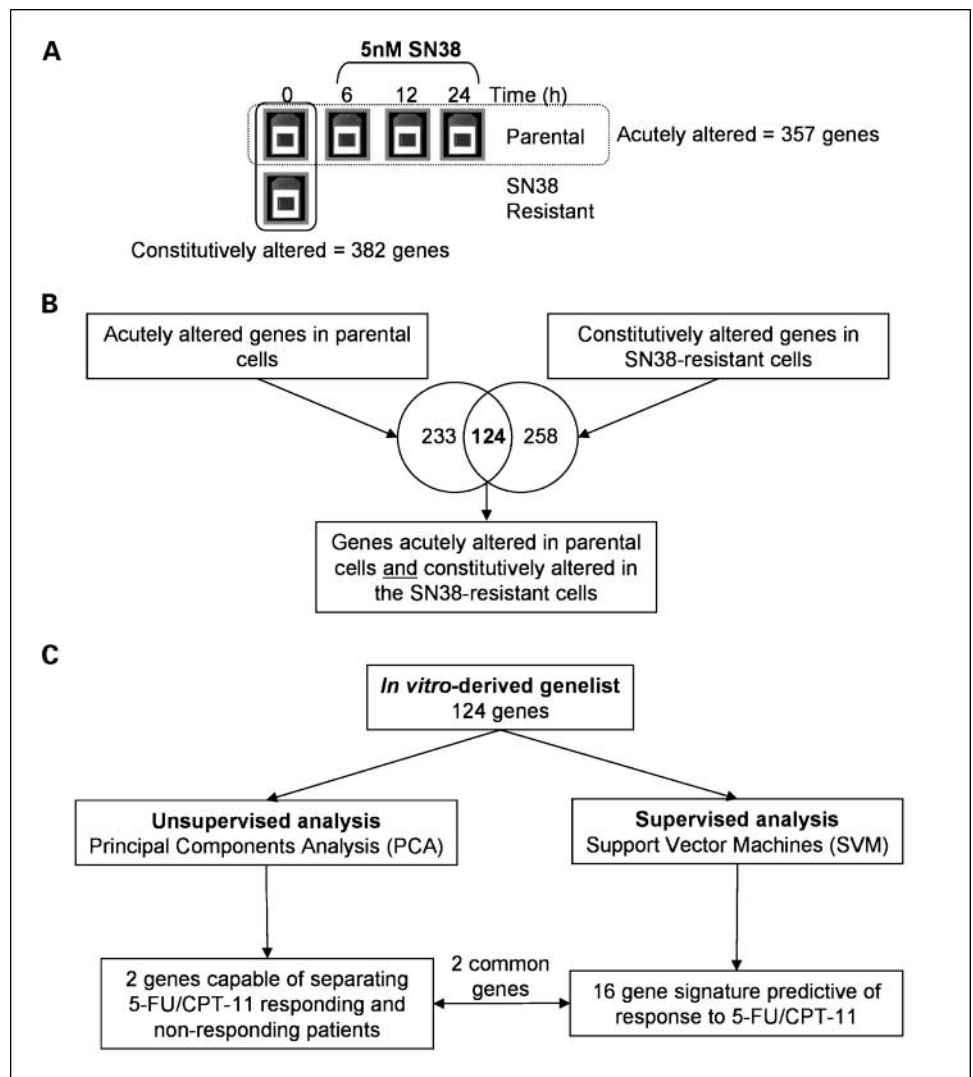
Quantitative reverse transcription-PCR analysis

To validate the microarray results, we measured the expression of a representative number of genes from the resultant crossover gene list (Fig. 1B; Supplementary Table S3) by quantitative reverse transcription-PCR (RT-PCR). We chose 25 (20%) genes from the list of 124 genes for validation in three independent experiments. The genes were selected based on at least 2-fold induction, with both highly and more moderately induced genes chosen, and both up-regulated and down-regulated genes were analyzed. In general, the validation gene list accurately represented the overall expression trends observed in the original gene list.

Total RNA was isolated from three independent experiments as described above. Reverse transcription was carried out using 2 µg RNA

³ www.ebi.ac.uk/arrayexpress/

Fig. 1. *A*, microarray experimental design using the Affymetrix HGU133 Plus2.0 arrays in triplicate. Data analysis showed that there were 357 genes acutely altered in the parental cells following SN38 treatment over time. In addition, there were 382 genes constitutively altered in the HCT116 SN38-resistant cell line when compared with the HCT116 parental line. *B*, Venn diagram showing 357 genes that are acutely altered by SN38 in HCT116 parental cells and 382 genes that are constitutively altered in the SN38-resistant daughter cell line. From these two gene lists, there were 124 genes that are acutely altered in the HCT116 parental cells following SN38 and also constitutively altered in the SN38-resistant daughter cells. *C*, flow diagram showing how the *in vitro*-derived gene list (124 genes) was used to predict patient response to 5-FU/CPT-11 based on unsupervised analysis (2 genes) and supervised analysis (16 genes).



using a Moloney murine leukemia virus-based reverse transcriptase kit (Invitrogen) according to the manufacturer's instructions. Quantitative RT-PCR amplification was carried out in a final volume of 10 μ L containing 5 μ L of 2 \times SYBR Green master mix (Qiagen), 4 μ L primers (2 μ M/L), and 1 μ L cDNA using an Opticon DNA Engine Thermal Cycler (Bio-Rad Laboratories). All amplifications were primed by pairs of chemically synthesized 18- to 22-mer oligonucleotides designed using freely available primer design software (Primer3)⁴ (Supplementary Table S1). Initially, temperature gradient analysis was carried out to determine primer-specific annealing temperatures. Reaction conditions were activation at 95°C for 10 min, denaturation at 95°C for 15 s, annealing 54°C to 62°C for 30 s, and extension 72°C for 1 min. All PCR amplifications were carried out for 40 cycles. Melt curve analysis was used to examine the specificity of an amplified product. All primers amplified products of similar size (~100-200 bp) with similar melting temperatures. Standard curves were generated to quantify the absolute expression levels of each target gene and the 18S rRNA reference gene in each sample. The relative expression level of each gene in samples of interest was calculated by dividing the amount of normalized target by the value in an untreated calibrator sample.

To discover whether the changes in gene expression were cell line-dependent phenomena, we examined the expression changes of 6 genes at 24 h following treatment with SN38 (IC_{50(72 h)} dose) in the HCT116

p53-null (5 nmol/L), RKO (7 nmol/L), H630 (25 nmol/L), LoVo (25 nmol/L), and HT29 (25 nmol/L) colorectal cancer cell lines. The genes that we chose to examine in the extended panel of colorectal cancer cell lines were those genes that displayed the highest levels of correlation between microarray and quantitative RT-PCR expression values throughout the time course experiment: IFITM1, CCNG2, TPMT, NUP8-8, DDHD1, and FLJ3871.

Fresh-frozen clinical samples

Total RNA extracted from a retrospective series of 20 pretreatment metastatic tumor biopsies from patients with advanced colorectal cancer was used for gene expression profiling studies. All patients provided written fully informed consent as per institutional review board/review ethics committee guidelines in the University of Southern California and approval was granted from this body. These patients underwent biopsy of colorectal liver metastases before commencing CPT-11/5-FU chemotherapy on the IFL schedule: CPT-11 125 mg/m² i.v. over 90 min and leucovorin 20 mg/m² as i.v. bolus injection immediately before 5-FU and 5-FU 500 mg/m² as i.v. bolus injection administered weekly for 4 weeks and repeated every 6 weeks. Of the 20 patients, the majority were male (n = 14). The primary tumor site included both colonic and rectal tumors, with the majority originating in the colon (n = 14).

Computed tomography imaging for response evaluation using WHO criteria was done every 6 weeks. Patients with measurable disease whose

⁴ <http://frodo.wi.mit.edu>

tumor burden had decreased by $\geq 50\%$ for at least 6 weeks were classified as responders. Patients whose tumor and all evidence of disease had disappeared were classified as showing complete response. Responders with anything less than complete response were categorized as showing partial response. Progressive disease was defined as a $\geq 25\%$ increase in tumor burden (compared with the smallest measurement) or the appearance of new metastatic lesions. Of these 20 patients, 1 had a complete response to treatment, 10 had a partial response to treatment, and 9 had progressive disease on treatment. For the purpose of this study, we have further defined "responders" as those patients with either complete or partial response and "nonresponders" as those patients with progressive disease. We have specifically excluded patients with stable disease on chemotherapy treatment.

Statistical analysis

For the 25 genes chosen for quantitative RT-PCR validation, the average fold changes by both microarray and quantitative RT-PCR were log transformed and the correlation between the expression values were examined using Pearson's product correlation moment (r ; MS Excel). The significance of the correlation was determined using a two-tailed test of significance.⁵ The following definitions of sensitivity and specificity were used: Sensitivity = Number of true positives / Number of true positives + Number of false negatives. Specificity = Number of true negatives / Number of true negatives + Number of false positives.

Results

Gene expression analysis of HCT116 parental and SN38-resistant cell lines. We carried out a gene expression profiling experiment to identify genes that may be mediating resistance to SN38 using the Affymetrix HGU133 Plus2.0 arrays (Fig. 1A). The transcriptional profiles of the HCT116 parental cells following treatment with 5 nmol/L SN38 (approximate IC_{50} dose at 72 h) for 6, 12, and 24 h were examined. In addition, we also examined the constitutive transcriptional profile of an HCT116 SN38-resistant daughter cell line (19). Following normalization and filtering, 357 genes were found to be significantly up-regulated or down-regulated by ≥ 2 -fold in HCT116 parental cells following SN38 treatment (Fig. 1A; Supplementary Table S2). Further analysis found that there were 382 genes whose expression was constitutively altered in the SN38-resistant cells compared with the parental line (Fig. 1A; Supplementary Table S3). When we combined these two gene lists into a Venn diagram, we found that 124 genes were common to both gene lists (Fig. 1B; Supplementary Table S4). This crossover gene list represents genes that were both acutely altered in the parental cells following SN38 treatment and also constitutively altered in the resistant cells. We hypothesized that this gene list may represent the key genes mediating SN38 resistance.

Validation of microarray results. To confirm the microarray experiment, 25 genes were chosen for validation by quantitative RT-PCR analysis. For the 25 genes acutely altered in the HCT116 parental cells following SN38 treatment over 6, 12, and 24 h, the Pearson's correlation (r) was 0.781, with $r^2 = 0.61$ ($P < 0.000001$; Fig. 2A). In terms of the genes that were constitutively altered between parental and resistant cells, Pearson's correlation (r) of the 25 genes was 0.795, with $r^2 = 0.63$ ($P = 0.000002$; Fig. 2B). We also examined the correlation of the data in a time-dependent manner and found that the highest correlation occurred at 12 h, with a correlation

(r) of 0.797, $r^2 = 0.6353$ ($P = 0.000002$; Supplementary Fig. S1B), followed by 24 h ($r = 0.734$, $r^2 = 0.5383$, $P = 0.00003$; Supplementary Fig. S1C) and 6 h ($r = 0.704$, $r^2 = 0.4953$, $P = 0.000086$; Supplementary Fig. S1A). These results compared well with the observed gene expression changes, as the largest changes in expression occurred at 12 h followed by 24 and 6 h as shown by both microarray and quantitative RT-PCR results.

For the 25 genes chosen for validation, 21 (84%) genes showed good overall concordance between microarray and quantitative PCR results. In addition, 64% (16 of 25) showed statistically significant correlations between expression values from the microarray results and the quantitative PCR results (Table 1). Of those genes that were statistically significant, the average correlation (r) was ~ 0.81 , with an average r^2 of ~ 0.67 .

Validation of genes in a panel of colorectal cancer cell lines. Extended validation of these genes in the colorectal cancer cell line panel showed that IFITM1, CCNG2, and TPMT were all up-regulated by an IC_{50} dose of SN38 in the extended colorectal cancer cell line panel. The highest levels of induction of IFITM1 were observed in the HT29 and LoVo cell lines (Fig. 3A). In addition, the HT29 cells displayed the highest basal levels of IFITM1 (data not shown); HT29 cells have mutant adenomatous polyposis coli that leads to constitutive activation of the Wnt/ β -catenin signaling pathway, which has been found to regulate IFITM1 expression (20). Surprisingly, the highest levels of induction of the p53 target gene CCNG2 were observed in the p53 mutant HT29 and H630 cell lines (Fig. 3A). It has been shown that both CCNG1 and CCNG2 are induced by DNA damage. The highest levels of induction of TPMT were observed in the HT29 and LoVo cell lines (Fig. 3A). In accordance with the HCT116 parental DNA microarray data, NUP8-8, DDHD1, and FLJ3871 were all down-regulated

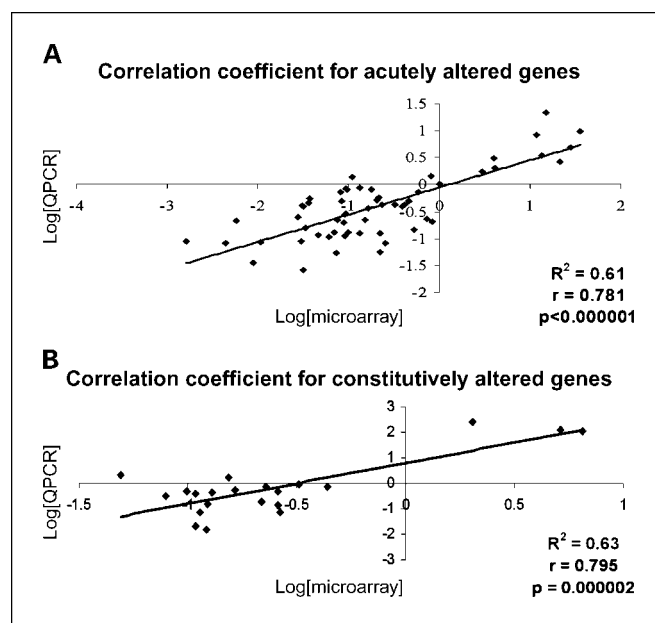


Fig. 2. Correlation between average fold changes in gene expression levels for (A) 25 target genes that are acutely altered in the HCT116 parental cells following 5 nmol/L SN38 treatment for 6, 12, and 24 h and (B) 25 genes that are constitutively altered in the HCT116 parental versus SN38-resistant daughter cells. The correlation coefficients were determined by comparing the average DNA microarray fold changes and average quantitative RT-PCR fold changes. All data are displayed as \log_2 .

⁵ http://www.wessa.net/rwasp_correlation.wasp

Table 1. Correlation analysis of microarray and real-time RT-PCR validation results

Common name	Description	Correlation coefficient, <i>r</i>	Coefficient of determination, <i>r</i> ²	<i>P</i>	Biological function
SLC30A1	Solute carrier family 30 (zinc transporter), member 1	0.13	0.02	0.068	Cation transport
NUP8-8	Nucleoporin 88 kDa	0.99	0.98	<0.0001	Transporter activity
Yeats 2	YEATS domain containing 2	0.9	0.81	<0.0001	Regulation of transcription, DNA-dependent
MCCC2	Methylcrotonoyl-coenzyme A carboxylase 2 (β)	0.4	0.16	0.197	Ligase activity
HSPC05-6	Armadillo repeat containing 8	0.68	0.46	0.0149	Binding
XRCC5	X-ray repair complementing defective repair in Chinese hamster cells 5	0.85	0.72	0.0005	ATP-dependent DNA helicase activity
DDHD1	DDHD domain containing 1	0.57	0.33	0.0529	Metal ion binding; hydrolase activity
CCNG2	Cyclin G2	0.93	0.86	<0.0001	Cell cycle checkpoint
IFITM1	IFN-induced transmembrane protein 1 (9-27)	0.87	0.75	0.0002	Receptor signaling protein activity; protein binding
ARID2	AT-rich interactive domain 2 (ARID, RFX-like)	0.78	0.61	0.0028	DNA binding; protein binding
NUP15-3	Nucleoporin 153 kDa	-0.08	0.01	0.8	DNA binding; transporter activity
MLLT10	Myeloid/lymphoid or mixed-lineage leukemia	0.98	0.96	<0.0001	Transcription factor activity; binding
ARF1	ADP-ribosylation factor 1	0.26	0.07	0.414	Receptor signaling protein activity; GTPase activity; binding
CTGLF1	Centaurin, γ -like family, member 1	0.64	0.41	0.025	GTPase activator activity; binding
FLJ3871		0.73	0.53	0.007	
KHDRBS1	KH domain containing, RNA binding, signal transduction associated 1	0.62	0.39	0.032	Binding; SH3/SH2 adaptor activity
MGC4126	Leucine-rich repeats and calponin homology domain containing 3	0.97	0.94	<0.0001	Protein binding
TPMT	Thiopurine S-methyltransferase	0.93	0.87	<0.0001	Thiopurine S-methyltransferase activity
BIRC6	Baculoviral IAP repeat-containing 6 (apollon)	0.46	0.21	0.132	Ligase activity; cysteine protease inhibitor activity
C2orf4	Chromosome 2 open reading frame 4	0.67	0.45	0.0171	
DKFZp547E087	Hypothetical gene LOC283846	0.67	0.45	0.0171	
LOC439987		0.76	0.57	0.0041	
MBNL1	Muscleblind-like (<i>Drosophila</i>)	0.53	0.28	0.0763	Nucleic acid binding; ion binding
Sec31L1	SEC31 homologue A (<i>Saccharomyces cerevisiae</i>)	0.42	0.18	0.163	Protein binding
ZCCHC7	Zinc finger, CCHC domain containing 7	0.54	0.29	0.0699	Nucleic acid binding; ion binding

following SN38 (IC₅₀) treatment in the extended cell line panel, with the exception of the hypothetical protein FLJ3871 in the HT29 cell line. The highest levels of down-regulation for NUP8-8 were observed in the H630 and LoVo cells (Fig. 3B). NUP8-8 is an essential member of the nuclear pore complex and studies have shown that NUP8-8 is overexpressed in tumor cells and that it is associated with a more aggressive phenotype in breast cancer (21, 22). Down-regulation of DDHD1 was observed in each cell line (Fig. 3B). The highest levels of down-regulation for FLJ3871 were observed in the RKO cells (Fig. 3B).

Gene expression analysis in clinical samples. We then wanted to assess whether our *in vitro*-derived gene lists were able to

predict response to 5-FU/CPT-11 using pretreatment metastatic biopsies from colorectal cancer patients who were subsequently found to have either responded or not responded to 5-FU/CPT-11 therapy. This analysis was done using both unsupervised and supervised approaches (Fig. 1C).

Within the patient-derived gene list, we examined the expression of the 124 genes that we have identified previously from our SN38 *in vitro* microarray experiment (described above). We then applied a fold-change filter to identify which of those genes were changing >1.5-fold between patients who responded to 5-FU/CPT-11 therapy and those who did not. The 1.5-fold gene list contained only two genes, *Drosophila* discs

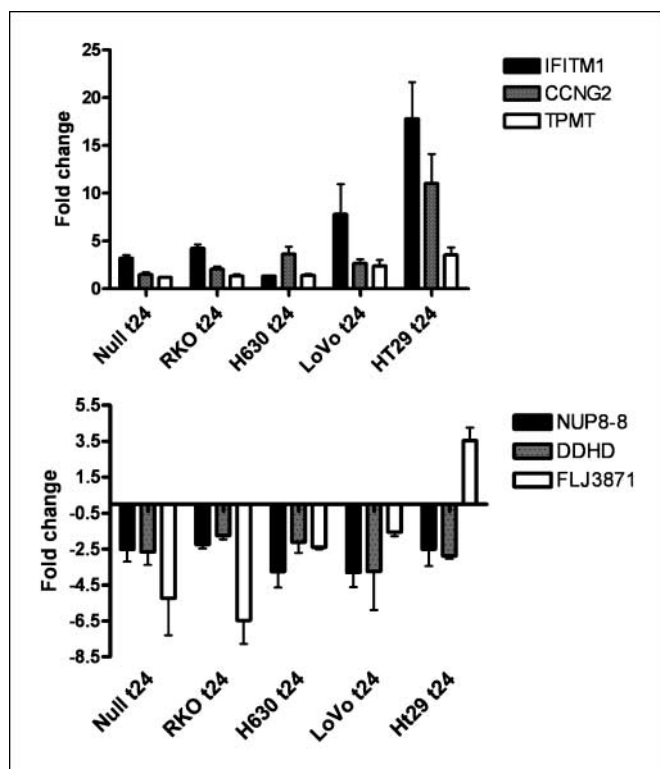


Fig. 3. Quantitative RT-PCR analysis showing fold induction compared with untreated control cells of IFITM1, CCNG2, TPMT, NUP8-8, XRCC5, CCNG2, and FLJ3871 mRNA in HCT116 p53-null ($IC_{50} = 5$ nmol/L), RKO ($IC_{50} = 7$ nmol/L), H630 ($IC_{50} = 25$ nmol/L), LoVo ($IC_{50} = 25$ nmol/L), and HT29 ($IC_{50} = 25$ nmol/L) cells following treatment with IC_{50} concentrations of SN38 for 24 h.

large homologue 1 (DLG1) and protein phosphatase 3 (formerly 2B), catalytic subunit, α isoform (PPP3CA). Using PCA, the combined expression of these two genes separated clearly responding from nonresponding patients. Only one nonresponding and two responding patients separated with the wrong group (Fig. 4A).

The induction of these two genes (DLG1 and PPP3CA) following SN38 treatment was examined in the HCT116 parental cells (Fig. 4B). The results showed that both DLG1 and PPP3CA were down-regulated following SN38 treatment over time and that this correlated well with the initial microarray analysis (DLG1 $r^2 = 0.512$ and PPP3CA $r^2 = 0.8992$). We also examined the basal expression of the two genes in the HCT116 parental cells and the SN38-resistant subline. The results showed that both genes were down-regulated in the SN38-resistant daughter line compared with parental and again this correlated well with the microarray data (Fig. 4B).

In the supervised approach, the *in vitro*-derived gene list was used as the starting features (genes) to build a predictive classifier for patient response to 5-FU/CPT-11 therapy. The classification rule was defined using the support vector machine algorithm, which identified a 16-gene signature (Table 2) that was assessed for overall accuracy using a leave-one-out cross-validation approach. Using this supervised approach, the 16-gene classifier correctly identified 9 of 11 responders (81.8% specificity) and 6 of 9 nonresponders (66.6% sensitivity) resulting in an overall accuracy of 75% as determined by

cross-validation. Of note, the 16-gene classifier identified using this supervised method contained the two genes, DLG1 and PPP3CA, identified using the unsupervised (PCA) analysis.

Discussion

In advanced colorectal cancer, combination chemotherapy regimens produce disappointing response rates of only 40% to 50%, which is due to either innate or acquired drug resistance. In an effort to identify genomic markers of response to SN38, we have carried out DNA microarray profiling on matched HCT116 parental and SN38-resistant colorectal cancer cell lines.

There have been several studies that have examined the role that various biomarkers play in the cellular response to CPT-11, including ABCG2 (23–25), carboxylesterase (26), and TOPO I (9, 27, 28). Yu et al. used a quantitative PCR assay to profile the gene expression changes associated with 24 genes in the CPT-11 pathway. They measured the gene expression changes of these genes in 52 matched tumor and normal tissues. They found that 6 of 24 (ABCB1, ABCG2, CES1, CES2, MLH1, and UGT1A1) genes had lower expression in tumor samples and 8 of 24 genes (ABCC1, CDC45L, DRG1, ERCC1, ERCC2, FXDR, TDP1, and TP53) had higher expression in tumor samples. Vallbohmer et al. also used quantitative PCR to investigate whether mRNA levels of drug targets (TS and TOPO I), enzymes involved in 5-FU metabolism (DPD), angiogenesis (vascular endothelial growth factor, interleukin-8, and epidermal growth factor receptor), and DNA repair/drug detoxification (ERCC1 and GST-P1) were associated with clinical outcome in 33 patients with metastatic colorectal cancer (8). They showed that high intratumor levels of epidermal growth factor receptor and ERCC1 were significantly associated with disease-free survival and furthermore that epidermal growth factor receptor and ERCC1 were primarily responsible for separating responders from nonresponders to CPT-11/5-FU-based treatment (8).

Previously, there have only been a few studies that investigated gene expression following CPT-11 treatment using a global profiling approach (29–31). Minderman et al. studied the changes in gene expression following CPT-11 treatment in pretreatment and post-treatment blood samples from patients with acute myeloid leukemia and chronic myeloid leukemia and also examined the changes in gene expression following SN38 treatment in HL60 cells. The results showed a down-regulation of cell cycle genes that is consistent with the loss of S phase and temporary delay in G_1 -S-phase transition. An important facet of this study was that it was the first study to show that the gene expression alterations observed following *in vitro* exposure to SN38 also occur *in vivo* following CPT-11 treatment (29). Chun et al. also carried out gene expression profiling on pretreatment and post-treatment effusion samples from 8 gastric cancer patients treated with CPT-11 and compared the expression profiles between responders and nonresponders. Five isoforms of the metallothionein family were identified to have significantly higher levels in the 5 responders compared with the 3 nonresponders (31). Many of the studies that are designed to identify clinically relevant genes involved in CPT-11 resistance have been undermined by either small sample sizes or inadequate validation of microarray results.

Our approach was to identify those *in vitro* genes that were acutely altered following SN38 treatment in the parental cells

and also constitutively altered in the SN38-resistant cells. Using this novel approach, we identified 124 genes that were both induced following drug treatment in the parental cells and also constitutively altered in the resistant setting. We hypothesize that these 124 *in vitro* genes may contain targets for therapeutic intervention and that further manipulation of this gene signature may lead to the identification of advanced colorectal cancer patients who may respond to CPT-11-based treatment. We have previously used this approach to identify novel determinants of response to either 5-FU or oxaliplatin in this model system and identified 116 and 37 genes that correlated with response to either 5-FU or oxaliplatin, respectively (10). Further functional analysis of three candidate genes, *spermidine/spermine N1-acetyltransferase*, *prostate-derived factor*, and *calretinin*, showed that they confer sensitivity or resistance by directly modulating drug response and therefore, importantly, do not represent secondary transcriptional changes that may be downstream and potentially less relevant to the resistance phenotype (10, 32). In confirmation of the microarray experiment, we found a strong correlation between the original microarray and subsequent quantitative RT-PCR results, which is in accordance with previously published data (10, 33, 34).

The most important facet of the present study was to use an *in vitro*-based approach to identify markers of resistance to

SN38 and to further assess whether any of these *in vitro*-derived genes could predict for response to CPT-11 therapy in patients. If this *in vitro* approach proves successful, it will reduce the number of patient biopsies that are currently needed to build predictive signatures of response to therapy. The limited number of available biopsies can then be best used as independent validation tools, with the result that the number of patient biopsies required for these studies will be significantly reduced. In our study, using the *in vitro* gene lists, PCA showed a clear separation between responding and non-responding patients using the combined expression of two genes, *DLG1* and *PPP3CA*.

Using the *in vitro*-derived gene lists, we have constructed an *in vitro*-derived predictive signature of response to therapy using the support vector machine algorithm. This 16 *in vitro* gene signature contains 14 genes that are down-regulated and 2 genes that are up-regulated in patients that respond to 5-FU/CPT-11 therapy. On internal cross-validation, the signature displayed an overall accuracy of 75%. The genes contained within the list were involved in cellular processes such as transcription, transport, metabolism, cell proliferation, and Ca²⁺ ion binding. The 16-gene signature also contained *PPP3CA* and *DLG1*, which were shown previously to separate responding and nonresponding patients using PCA. *PPP3CA*

Fig. 4. A. PCA plot in two dimensions showing patient separation using the 1.5-fold changing (between the responding and nonresponding patients) *in vitro* gene list (2 genes; *DLG1* and *PPP3CA*). Gray circles, responding patients; black circles, nonresponding patients. B. quantitative RT-PCR validation analysis of the two genes identified from the PCA analysis, *DLG1* and *PPP3CA*. Fold induction compared with untreated control cells in the parental setting following SN38 treatment and also the fold change in untreated SN38-resistant cells compared with untreated HCT116 parental cells. The correlation coefficients were determined by comparing the average DNA microarray fold changes in the parental cells with average quantitative RT-PCR fold changes in the parental cells.

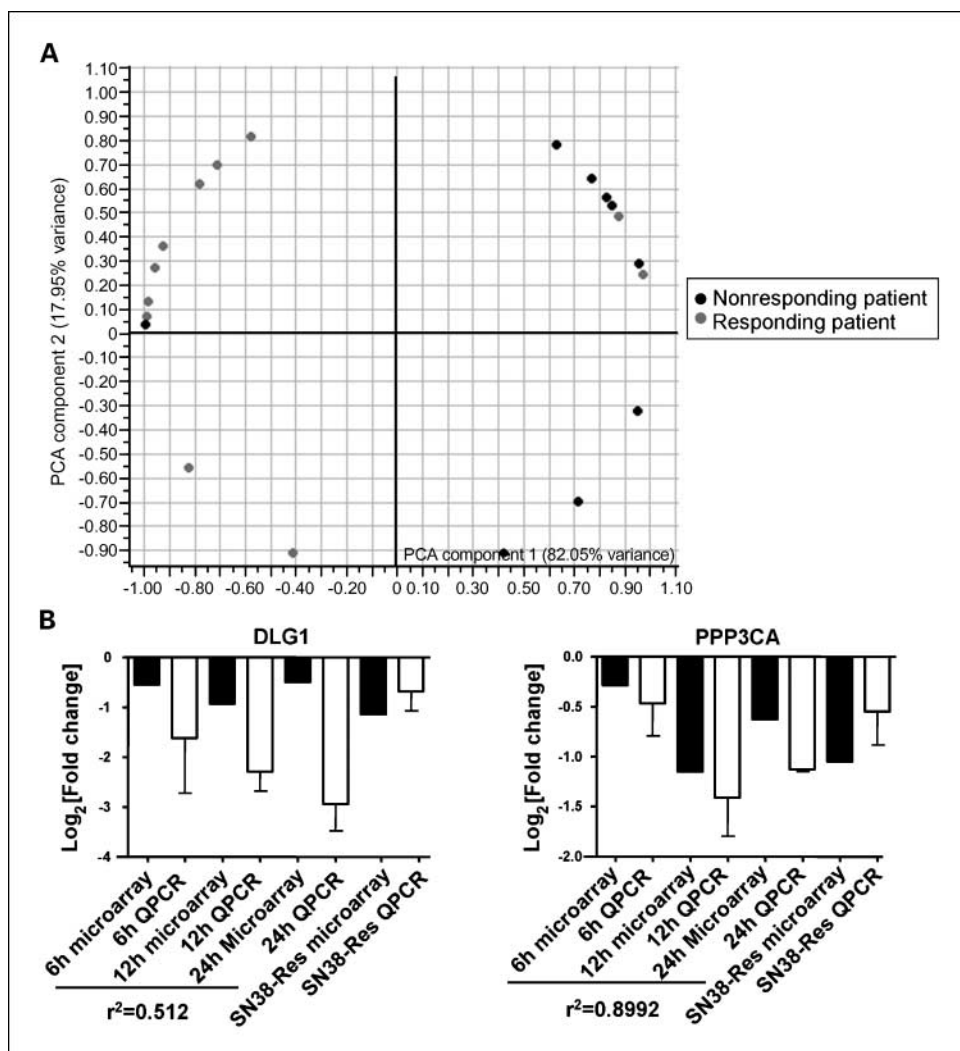


Table 2. Sixteen *in vitro*-derived predictive signature of response to 5-FU/CPT-11 therapy

Common name	Description	Fold change in responders	Predictive value	Gene Ontology
SP1	<i>Homo sapiens</i> Sp1 transcription factor mRNA	-1.55	7.68	Transcription
KIAA1267	KIAA1267	2.04	7.43	Nucleus
TPMT	<i>H. sapiens</i> thiopurine S-methyltransferase mRNA	-1.68	5.9	Nucleobase, nucleoside, nucleotide and nucleic acid metabolic process
ARF1	<i>H. sapiens</i> ADP-ribosylation factor 1 transcript variant	-1.55	5.9	Endoplasmic reticulum to Golgi vesicle-mediated transport
SP1	<i>H. sapiens</i> Sp1 transcription factor mRNA	-1.33	5.74	Transcription
NCOR1	<i>H. sapiens</i> nuclear receptor corepressor 1 mRNA	-1.44	5.74	Transcription from RNA polymerase II promoter
CLTC	<i>H. sapiens</i> clathrin heavy chain mRNA	-1.25	5.46	Intracellular protein transport
ARF1	<i>H. sapiens</i> ADP-ribosylation factor 1 transcript variant	-1.39	4.81	Endoplasmic reticulum to Golgi vesicle-mediated transport
CTBP2	COOH-terminal binding protein 2	-1.61	4.81	L-Serine biosynthetic process
MCCC2	<i>H. sapiens</i> methylcrotonoyl-coenzyme A carboxylase 2 (β)	-1.35	4.81	Leucine catabolic process
DLG1	<i>H. sapiens</i> mRNA for presynaptic protein SAP97 variant protein	-1.43	4.81	Endothelial cell proliferation
SNRPA1	Small nuclear ribonucleoprotein polypeptide A	-1.29	4.69	Nuclear mRNA splicing, via spliceosome
STK4	Serine/threonine kinase 4	1.84	4.69	Cell morphogenesis
REPS1	<i>H. sapiens</i> RALBP1-associated Eps domain containing 1	-1.3	4.43	Calcium ion binding
PPP3CA	<i>H. sapiens</i> protein phosphatase 3 (formerly 2B) catalytic	-1.42	4.43	G ₁ -S transition of mitotic cell cycle
MALAT1	<i>H. sapiens</i> metastasis-associated lung adenocarcinoma transcript 1	-1.37	4.43	

is a Ca²⁺/calmodulin-dependent protein phosphatase, which is important for Ca²⁺-mediated signal transduction (35). DLG1 is a mammalian homologue of the *Drosophila* discs large tumor suppressor protein (36). Dlg1 along with Scrib and lethal giant larvae forms the Scribble complex, which regulates epithelial polarity (37). In this type of "predictive analysis," the aim of the study is to identify genes that have a high discriminatory power to separate the two patient subgroups; therefore, single genes contained within the signature may not be either functionally related to the development of drug resistance or represent a viable "druggable" target.

Recently, Del Rio et al. generated a 14-gene signature that was 95% accurate in identifying FOLFIRI responding and non-responding patients (38). When comparing our 16 gene signature with this 14-gene signature, there was no overlap in composition. Several reasons could account for this. Firstly, their study used the primary tumor to predict for response in the metastatic disease and we were analyzing the metastatic disease site. Secondly, our aim was to use *in vitro* models to identify genes that could predict response to chemotherapy in patients, whereas Del Rio et al. generated a gene list directly from the patient samples. However, it is widely accepted that many different gene lists can predict response in patients at a similar level (18).

In conclusion, we have identified 124 genes through *in vitro* transcriptional profiling studies that correlate with SN38 response/resistance and have shown strong correlations between microarray data and quantitative RT-PCR validation data. We have also shown that the regulation of these genes is not cell line dependent, as we have positively validated several of these genes in a panel of 5 additional colorectal cancer cell lines. We have assessed whether genes identified using an

in vitro-based approach are able to predict treatment response in patient samples. The results show that several of the *in vitro* genes were differentially regulated between these two patient populations; in addition, unsupervised (PCA) and supervised (support vector machine) classification analysis revealed that several of these *in vitro* genes were able to separate responding and nonresponding patients based on their expression profiles. In our novel *in vitro*-based approach, we have shown that we are able to gain meaningful data using *in vitro* model systems. Although this study has shown a good separation of patient samples, it contained only 20 patients; therefore, the current analysis will require further independent validation in a much larger patient cohort. There have only been a few reported studies in the literature that have tried to identify predictive signatures of response to chemotherapy in colorectal cancer. The recent study by Del Rio et al. identified a 14-gene signature that was predictive for 5-FU/CPT-11 therapy from only 21 primary colorectal cancer patients (38). Ghadimi et al. used oligonucleotide and cDNA-based microarray profiling of 30 rectal adenocarcinoma biopsies to identify a 54-gene signature predictive of response to preoperative chemoradiotherapy based on a training set of 23 samples and a test set of 7 samples (39). In addition, Gaudens et al. identified 679 genes that predicted sensitivity to 5-FU/CPT-11 therapy from only 13 patients, which included the following samples: tumor ($n = 8$), metastatic ($n = 12$), and adjacent normal ($n = 6$). They further validated a subset of these genes in two independent patients and showed a good concordance with the original experiment (40). These two studies, although hampered by their low sample numbers, have shown that it is possible to generate signatures of response to chemotherapy in the advanced

disease setting using either the primary or the metastatic site. In addition, the Graudens et al. study showed that the primary and metastatic tumor samples clustered in terms of drug sensitivity and not tumor site. Therefore, it should be possible to build on these studies by combining primary and metastatic biopsies, in an aid to increasing sample numbers to a statistically robust level, and this hypothesis will form the basis of our next study. Finally, it should be noted that the biopsies used in this study were derived from a retrospective group of patients who had undergone a liver biopsy, and identifying large retrospective cohorts of patients with adequate

samples and clinical information for these types of analysis will be difficult. The optimal course of action is to perform these types of analyses in a prospective manner in a clinical trial to achieve the required number of patients and samples and to match these with a robust clinicopathologic data set.

Disclosure of Potential Conflicts of Interest

P. Johnston is employed by and has an ownership interest in Almac Diagnostic. He has received a research grant from Amgen and has sat on the advisory boards of Pfizer, Amgen, GlaxoSmithkline, and Roche.

References

- Douillard JY, Cunningham D, Roth AD, et al. Irinotecan combined with fluorouracil compared with fluorouracil alone as first-line treatment for metastatic colorectal cancer: a multicentre randomised trial. *Lancet* 2000;355:1041–7.
- Giacchetti S, Perpoint B, Zidani R, et al. Phase III multicenter randomized trial of oxaliplatin added to chronomodulated fluorouracil-leucovorin as first-line treatment of metastatic colorectal cancer. *J Clin Oncol* 2000;18:136–47.
- Johnston PG, Lenz HJ, Leichman CG, et al. Thymidylate synthase gene and protein expression correlate and are associated with response to 5-fluorouracil in human colorectal and gastric tumors. *Cancer Res* 1995;55:1407–12.
- Edler D, Blomgren H, Allegra CJ, et al. Immunohistochemical determination of thymidylate synthase in colorectal cancer—methodological studies. *Eur J Cancer* 1997;33:2278–81.
- Lenz HJ, Danenberg KD, Leichman CG, et al. p53 and thymidylate synthase expression in untreated stage II colon cancer: associations with recurrence, survival, and site. *Clin Cancer Res* 1998;4:1227–34.
- Takebe N, Zhao SC, Ural AU, et al. Retroviral transduction of human dihydropyrimidine dehydrogenase cDNA confers resistance to 5-fluorouracil in murine hematopoietic progenitor cells and human CD34⁺-enriched peripheral blood progenitor cells. *Cancer Gene Ther* 2001;8:966–73.
- Salonga D, Danenberg KD, Johnson M, et al. Colorectal tumors responding to 5-fluorouracil have low gene expression levels of dihydropyrimidine dehydrogenase, thymidylate synthase, and thymidine phosphorylase. *Clin Cancer Res* 2000;6:1322–7.
- Vallbohmer D, Iqbal S, Yang DY, et al. Molecular determinants of irinotecan efficacy. *Int J Cancer* 2006;119:2435–42.
- Sugimoto Y, Tsukahara S, Oh-hara T, Isoe T, Tsuruo T. Decreased expression of DNA topoisomerase I in camptothecin-resistant tumor cell lines as determined by a monoclonal antibody. *Cancer Res* 1990;50:6925–30.
- Boyer J, Allen WL, McLean EG, et al. Pharmacogenomic identification of novel determinants of response to chemotherapy in colon cancer. *Cancer Res* 2006;66:2765–77.
- Maxwell PJ, Longley DB, Latif T, et al. Identification of 5-fluorouracil-inducible target genes using cDNA microarray profiling. *Cancer Res* 2003;63:4602–6.
- Barrier A, Boelle PY, Roser F, et al. Stage II colon cancer prognosis prediction by tumor gene expression profiling. *J Clin Oncol* 2006;24:4685–91.
- Barrier A, Lemoine A, Boelle PY, et al. Colon cancer prognosis prediction by gene expression profiling. *Oncogene* 2005;24:6155–64.
- Barrier A, Roser F, Boelle PY, et al. Prognosis of stage II colon cancer by non-neoplastic mucosa gene expression profiling. *Oncogene* 2007;26:2642–8.
- Wang Y, Jatkoet, Zhang Y, et al. Gene expression profiles and molecular markers to predict recurrence of Dukes' B colon cancer. *J Clin Oncol* 2004;22:1564–71.
- Eschrich S, Yang I, Bloom G, et al. Molecular staging for survival prediction of colorectal cancer patients. *J Clin Oncol* 2005;23:3526–35.
- van de Vijver MJ, He YD, van't Veer LJ, et al. A gene-expression signature as a predictor of survival in breast cancer. *N Engl J Med* 2002;347:1999–2009.
- Fan C, Oh DS, Wessels L, et al. Concordance among gene-expression-based predictors for breast cancer. *N Engl J Med* 2006;355:560–9.
- Boyer J, McLean E, Aroori S, et al. Characterization of p53 wild-type and null isogenic colorectal cancer cell lines resistant to 5-fluorouracil, oxaliplatin, and irinotecan. *Clin Cancer Res* 2004;10:2158–67.
- Andreu P, Colnot S, Godard C, et al. Identification of the FITM family as a new molecular marker in human colorectal tumors. *Cancer Res* 2006;66:1949–55.
- Agudo D, Gomez-Esquer F, Martinez-Arribas F, Nunez-Villar MJ, Pollan M, Schneider J. Nup88 mRNA overexpression is associated with high aggressiveness of breast cancer. *Int J Cancer* 2004;109:717–20.
- Martinez N, Alonso A, Moragues MD, Ponton J, Schneider J. The nuclear pore complex protein Nup88 is overexpressed in tumor cells. *Cancer Res* 1999;59:5408–11.
- Wierdl M, Wall A, Morton CL, et al. Carboxylesterase-mediated sensitization of human tumor cells to CPT-11 cannot override ABCG2-mediated drug resistance. *Mol Pharmacol* 2003;64:279–88.
- Bessho Y, Oguri T, Achiwa H, et al. Role of ABCG2 as a biomarker for predicting resistance to CPT-11/SN-38 in lung cancer. *Cancer Sci* 2006;97:192–8.
- Kawabata S, Oka M, Shiozawa K, et al. Breast cancer resistance protein directly confers SN-38 resistance of lung cancer cells. *Biochem Biophys Res Commun* 2001;280:1216–23.
- van Ark-Otte J, Kedde MA, van der Vijgh WJ, et al. Determinants of CPT-11 and SN-38 activities in human lung cancer cells. *Br J Cancer* 1998;77:2171–6.
- Giovannella BC, Stehlin JS, Wall ME, et al. DNA topoisomerase I-targeted chemotherapy of human colon cancer in xenografts. *Science* 1989;246:1046–8.
- Eng WK, McCabe FL, Tan KB, et al. Development of a stable camptothecin-resistant subline of P388 leukemia with reduced topoisomerase I content. *Mol Pharmacol* 1990;38:471–80.
- Minderman H, Conroy JM, O'Loughlin KL, et al. *In vitro* and *in vivo* irinotecan-induced changes in expression profiles of cell cycle and apoptosis-associated genes in acute myeloid leukemia cells. *Mol Cancer Ther* 2005;4:885–900.
- Bhonde MR, Hanski ML, Budczies J, et al. DNA damage-induced expression of p53 suppresses mitotic checkpoint kinase hMps1: the lack of this suppression in p53MUT cells contributes to apoptosis. *J Biol Chem* 2006;281:8675–85.
- Chun JH, Kim HK, Kim E, et al. Increased expression of metallothionein is associated with irinotecan resistance in gastric cancer. *Cancer Res* 2004;64:4703–6.
- Allen WL, McLean EG, Boyer J, et al. The role of spermidine/spermine N1-acetyltransferase in determining response to chemotherapeutic agents in colorectal cancer cells. *Mol Cancer Ther* 2007;6:128–37.
- Jenson SD, Robotory RS, Bohling SD, et al. Validation of cDNA microarray gene expression data obtained from linearly amplified RNA. *Mol Pathol* 2003;56:307–12.
- Rajeevan MS, Vernon SD, Taysavang N, Unger ER. Validation of array-based gene expression profiles by real-time (kinetic) RT-PCR. *J Mol Diagn* 2001;3:26–31.
- Lakshmi Kuttamma A, Selvakumar P, Kanthan R, Kanthan SC, Sharma RK. Increased expression of calcineurin in human colorectal adenocarcinomas. *J Cell Biochem* 2005;95:731–9.
- Muller BM, Kistner U, Veh RW, et al. Molecular characterization and spatial distribution of SAP97, a novel presynaptic protein homologous to SAP90 and the *Drosophila* discs-large tumor suppressor protein. *J Neurosci* 1995;15:2354–66.
- Gonzalez-Mariscal L, Betanzos A, Avila-Flores A. MAGUK proteins: structure and role in the tight junction. *Semin Cell Dev Biol* 2000;11:315–24.
- Del Rio M, Molina F, Bascoul-Mollevi C, et al. Gene expression signature in advanced colorectal cancer patients select drugs and response for the use of leucovorin, fluorouracil, and irinotecan. *J Clin Oncol* 2007;25:773–80.
- Ghadimi BM, Grade M, Difilippantonio MJ, et al. Effectiveness of gene expression profiling for response prediction of rectal adenocarcinomas to preoperative chemoradiotherapy. *J Clin Oncol* 2005;23:1826–38.
- Graudens E, Boulanger V, Mollard C, et al. Deciphering cellular states of innate tumor drug responses. *Genome Biol* 2006;7:R19.